



# Science Health and Wellbeing (SHaW) Futures Academy

A new 11-19 specialist school for Bromley

## Consultation Proposal

## WELCOME

On behalf of the Bromley Educational Trust (BET) we are keen to seek your views on our proposal to open a new Science, Health and Wellbeing Academy for 11–19-year-olds.

**SHaW Futures Academy** is planned to open in 2019 and will offer an innovative blend of academic, applied general and technical education. The employer-driven curriculum aims to provide young people with a unique educational experience and significantly improve their career opportunities.

Our vision for SHaW Futures Academy is that its practice-based education will lead to students progressing into further training, university or employment within the chosen specialism of Science, Health and Wellbeing.

Partnership and collaboration are key values for SHaW Futures Academy. We want to ensure that its benefits are maximised for the local area and that all our stakeholders – including parents, residents, schools and the Local Authority – can contribute to the development of this exciting project.

Thank you for your interest in SHaW Futures Academy and we look forward to hearing your views.



**Sam Parrett OBE**  
CEO of Bromley Educational Trust  
Principal and CEO of London South East Colleges

## SPONSORS' STATEMENT

Canterbury Christ Church University, King's College Hospital NHS Foundation Trust, Mytime Active, Oxleas NHS Foundation Trust and London South East Colleges are delighted to be involved in the development of SHaW Futures Academy.

As well as offering an exciting alternative to traditional 11–19 secondary education, we aim to create a centre of technical and vocational excellence specialising in Science, Health and Wellbeing.

Through high quality, employer-driven project work, SHaW Futures Academy will equip young people with strong technical and employability skills to prepare them for a successful career.

Our aim is to create future employees who are highly skilled, motivated and work-ready. This will not only improve employment opportunities for young people, but will also help to address the ever-growing skills gap within our industry, supporting the local economy.

Thank you for your interest and support.

King's College Hospital   
NHS Foundation Trust



## HOW IS SHAW FUTURES ACADEMY DIFFERENT?

### CONCEPT

We are proposing a new approach to secondary education. We will offer 11–19-year-olds the opportunity to study at a brand new school equipped to the highest standards, with sponsorship from a university, employer partners and other interested bodies.

The Academy will specialise in science, health and wellbeing, based on needs of local employers and the economy. There is a growing skills gap emerging, both nationally and regionally within this sector and many exciting career and employment opportunities are on offer.

Our approach will be based on 'learning by doing' and combines the requirements of the national curriculum, with technical and vocational learning. Local and national employers are heavily involved in setting the curriculum and will also provide project support and work experience for students.

At SHaW Futures Academy, the first two years of learning (Years 7&8) will offer a wholly mainstream educational experience with a broad curriculum. Excellent pastoral care will be provided along with a wide range of enrichment activities.

Uniquely, the science, health and wellbeing specialism will be contextualised within the curriculum with a strong focus on healthy lifestyles, fitness and exercise.

From Year 9, the curriculum will be similarly broad, with core subjects including English, maths, science, humanities and languages.

On moving into KS4, three pathways will be available to students with options to specialise within a number of areas across health, science and sport. Each pathway will also include the development of employability skills and the opportunity to gain an enterprise qualification.

Years 12&13 (KS5) will offer highly specialist pathways, which will be established with employers focusing wholly on science, health and wellbeing.

Students will be given new opportunities and new ways of learning which will allow them to realise their potential. After attending SHaW Futures Academy, we expect students to progress onto a range of pathways, including Apprenticeships and higher education, as well as into fulfilling employment. Whatever the student chooses to go on to do, SHaW Futures Academy will provide them with valuable skills and an excellent base to seek and secure employment.



**SHaW Futures Academy will differ from a mainstream secondary school in several important ways:**

- It is backed by a university sponsor and industry partners
- Employers are involved in designing and delivering the curriculum and will be actively involved in governing the school
- It will have specialist, purpose-built facilities which replicate real-life working environments
- There will be an extended day for Year 9–13 students (KS4&5) to provide time for employer visits, sport and other enrichment activities

## OUR VISION

We will provide younger students (Years 7&8) with high quality, all-round education and excellent pastoral care. Our broad curriculum and wide range of enrichment activities will help develop a variety of skills and interests – underpinned by a strong academic foundation and expert teaching in core subjects.

As students progress through the school, more specialist provision will be available – which will respond directly to the demand for specific skills from regional and national employers.

Proposed health-related courses will include genetics and genetic engineering, microbiological techniques, biochemistry and biochemical techniques. Students will be trained within the fields of laboratory science, forensic science, medical science, environmental science and biological, chemical and physical science.

These courses offer the opportunity to enter a range of fields, including those of clinical or medical technologists. This includes responsibility for maintaining and servicing complex, specialised equipment used to diagnose and treat patients, such as radiotherapy, bioengineering and laser procedures.

We will offer a range of courses that relate to sports sciences – covering biomechanics and sports nutrition. These can lead to careers such as exercise physiologists, sports psychologists.

**Through these innovative pathways, we aim to make a significant contribution to the continuing economic and social success of Bromley and its surrounding areas by providing skilled, employable young people to the Science, Health and Wellbeing industries.**

## OUR PLEDGE

SHaW Futures Academy has made a pledge that every student who successfully completes relevant studies will be provided with the opportunity to progress onto:

- A place at University or Further Education College
- An Apprenticeship
- Industry-relevant employment

## DEMOGRAPHICS AND DEMAND

Located in south-east London, Bromley is the largest London Borough in the city. Demand for places at schools in Bromley will increase considerably over the coming years as the core population of Bromley continues to grow. In fact, the GLA estimates that an additional 34 secondary forms of entry will be needed by 2022.

Based on the 2014 Bromley Joint Strategic Needs Assessment it is evident that Bromley will continue to face growing demand on health and wellbeing services with an aging population, inequalities in life expectancy and growing rates of obesity in adults and children.

However, the ability to meet the strategic health objectives and the needs of local employers is currently constrained by shortages of technical skills and young recruits with specific health science skills. Therefore the rationale to offer a scientifically focused, high technology education option from the age of 11, via the introduction of the SHaW Futures Academy, will enhance educational choice and achievement for a broad catchment area.



## CAREER OPPORTUNITIES

Through strategic partnerships with the science, health and wellbeing sectors, the SHaW Futures Academy aims to engage the interest and creativity of talented young people interested in the field of science, health and wellbeing. The curriculum will combine high levels of theoretical knowledge and practical project-based learning.

Students will develop advanced levels of scientific and technical skills and will gain valuable employability skills within this specialist sector. This will prepare them for university, Apprenticeships and employment in many different areas including:

### HEALTH AND CARE

- Nursing and Midwifery
- Nursing associates and healthcare assistants
- Apprenticeships in clinical and non-clinical roles
- Healthcare management and/or administration
- Other health professions (e.g. arts/music/drama therapist; chiropodist/podiatrist; dietitian; occupational therapist; orthoptist; orthotist; paramedic; physiotherapist; prosthetist; radiographer; speech and language therapist)
- Lab Technician
- Healthcare Assistant
- Healthcare Scientist



### SUPPORTING THE PUBLIC HEALTH AGENDA

- Nutritionist
- Sports Therapist
- Applied Psychologist
- Health Trainer
- Sports Therapist
- Counsellor
- Psychotherapist



### THE SPORTS INDUSTRY

- Biomechanist
- Exercise Physiologist
- Sport Psychologist
- Sports Nutritionist
- Personal Trainer



### APPLIED SCIENCE TECHNICAL CAREERS

- Clinical or Medical Technologist
- Geneticist
- Microbiologist
- Biochemist
- Forensic Scientist
- Environmental Scientist
- Bioengineering



## VALUES AND PRINCIPLES

Our requirements and expectations in relation to standards of dress, behaviour and expectations will mirror business culture and the real world of work. This will include standards of punctuality and attendance, commitment to achievement and the desire to exceed expectations in all areas.

SHaW Futures Academy will be a purpose-built learning environment where young people will be supported to discover and develop a passion for learning. The strong links with employers and the clear progression to employment will open a range of opportunities and help motivate students to succeed.

The opportunity to work alongside staff at local businesses will help motivate the students and help them become highly employable. However, to gain maximum benefit, students will need to work hard and be dedicated to their studies. The facilities provided at the Academy itself and at the premises of our employer and education partners, will be cutting-edge and meet the best industry standards.

Teachers, lecturers and technical support staff will have considerable experience in the science, health and wellbeing industry, making them excellent role models. Learning programmes will be practical and related to real commercial and industrial situations. They will also be based around challenging employer-led projects.

SHaW Futures Academy will regularly update the learning environment to keep abreast of developments in technology. Our values will be based on respect, integrity, valuing diversity and being encouraged to consider and support others. Innovation and creativity will be key features of SHaW Futures Academy.



### SHaW Futures Academy is committed to:

- Offering a broad and balanced curriculum for Years 7–9 with a strong focus on healthy lifestyles, fitness and exercise
- Providing Year 10&11 (KS4) students with the opportunity to specialise within a number of areas across health, science and sport
- Offering Years 12&13 (KS5) highly specialist pathways, which will be established with employers focusing wholly on Science, Health and Wellbeing
- Developing high aspirations and improving life chances for young people via a high-quality and well-rounded technical education
- Promoting and developing economic development through the provision of well-qualified and motivated young people into local employment
- Guaranteeing a further/higher education or employment opportunity for every student on satisfactory completion of their studies

## CURRICULUM MODEL AND DEVELOPMENT

SHaW Futures Academy will improve the employment prospects of young people by engaging them in high-quality employer-driven practical work and business-related learning. The involvement of the Canterbury Christ Church University and Kings College Hospital NHS Trust in the design of the curriculum will ensure that students who succeed (with the relevant programme of study) can progress onto higher education if desired.

Our curriculum will provide the educational foundation for students to progress into a variety of careers within the science, health and wellbeing industry. For those students completing Key Stage 5 and wishing to directly enter employment, the curriculum will facilitate progression to an Apprenticeship through partner employers and London South East Colleges.

Alternatively, students will be equipped to extend their studies through A-Levels and industry-standard qualifications such as BTECs.

Students can expect an exciting and fresh way of learning. This will include an extended day for KS4/5 students, integrated work-oriented learning and business ethos.

Our commitment to focusing on the skills required by employers ensures students will be on track for success in the 'world of work'. Students will study for qualifications that are recognised and valued by employers, alongside their essential core curriculum subjects. Students will develop important personal and employability skills such as teamwork, communication, time management, problem solving, decision-making, business awareness, self-management and initiative. Each student will have an individual learning plan that will ensure that they are stretched, challenged and supported to achieve their full potential.

SHaW Futures Academy curriculum model integrates a sound general education with technical studies informed by employer and university partners. This includes experience of work, realistic employer defined projects and employer mentors. A key feature of the curriculum will be 'project-based learning' allowing students to develop the ability to work both individually and in teams. These projects will help students develop valuable skills in areas such as critical thinking, team working, evaluation and project and time management.

Employers and other partners from the science, health and wellbeing sectors will help to plan projects and support their delivery. Projects will help students relate their learning to the workplace. The project-based approach in the technical curriculum will be connected to the core subjects. Teaching methods used in all subjects will reinforce the project-based learning. Students will undertake projects that use knowledge and skills from English, mathematics, science, humanities and languages within a Health and Wellbeing context. Core subjects will also have sufficient teaching time to ensure students achieve well in these subjects.

### School day

The SHaW Futures Academy will have a longer day than most secondary schools for its KS4 and KS5 students. For example a typical day for students may begin at 8.30am and finish at 5.00pm.

This additional time will be used for employer visits, sporting activities, enrichment and support.

Extra-curricular activities, only available after-school in most secondary schools, will form an integral part of the timetable and available to all students.

### School calendar

The curriculum is delivered over 40 weeks with six terms of approximately seven weeks each. There will be breaks of one to two weeks between terms, and a longer break over the summer to provide for holidays and other activities.

### Specialist facilities

To deliver the science, health and wellbeing specialism effectively, the learning environment and resources will include dedicated laboratories and training facilities. In addition, students will have access to the highly specialised facilities available at our industry partners' premises.

The core curriculum is a key priority at SHaW Futures Academy. KS4 Students will study for core subjects (including English, mathematics, science, languages and humanities) in a superb learning environment using the latest technology and learning resources.

## INCLUSION – CATERING FOR ALL STUDENTS

SHaW Futures Academy will be an inclusive environment that inspires young people and responds to their needs. This is essential if students are to participate, achieve and improve their life chances. This will be achieved in variety of ways, including:

- All students will have individual learning plans. Learning will be personalised with specialist staff and resources. There will be a strong focus on raising achievement in partnership with parents/carers
- Transition and induction arrangements will ensure all staff have a thorough understanding of the needs of all the young people who join the Academy
- Support, wherever possible, will be within the classroom
- Support for literacy and numeracy will be delivered in the context of Science, Health and Wellbeing. This will emphasise the relevance of these skills to learning, employability and life in general
- ICT will be used to track and record progress, as well as helping to provide differentiated learning programmes for each student
- Working with our sponsors and employer partners to develop strategies that engage disadvantaged or disaffected young people. Mentors will, for example, encourage and model positive learning and working behaviours
- There will be a full programme of Continuing Professional Development (CPD) to ensure that all staff are sufficiently trained and updated. This will ensure that an inclusive approach to learning and teaching is achieved
- Parents and carers will be informed of student progress on a regular basis, with opportunities to meet staff for further discussion

### Gender

Traditionally, girls are reluctant to study engineering, mathematics and technology related subjects, seeing these as male dominated and 'unfeminine'. This has led to women being under-represented in the Science, Technology, Engineering and Maths (STEM) sector.

We believe the SHaW Futures Academy has a chance to challenge these traditional behaviours by capitalising on the perceived stronger interest in the health and caring professions from girls.

In terms of provision for male students, it is anticipated that the opportunity to pursue sport and fitness-related technical careers will be a similarly motivating factor, which in time may start to address the gender imbalance.



### Special Educational Needs (SEN) Policy

SHaW Futures Academy will be an inclusive environment that is responsive to the needs of all young people. This is essential if students are to participate, achieve and improve their life chances. We are committed to the SEN Code of Practice and will arrange support and interventions for literacy (reading, handwriting and spelling), communication and social interaction, emotional literacy and behaviour support. Tailored support will be provided to students who have a physical impairment, with a view to establishing the greatest degree of inclusion possible for each student.

Intensive work with students requiring higher levels of support will be provided. Additional support for all students whose first language is not English will be provided through the advice and support of English as an Additional Language (EAL) specialists.

### Gifted and talented

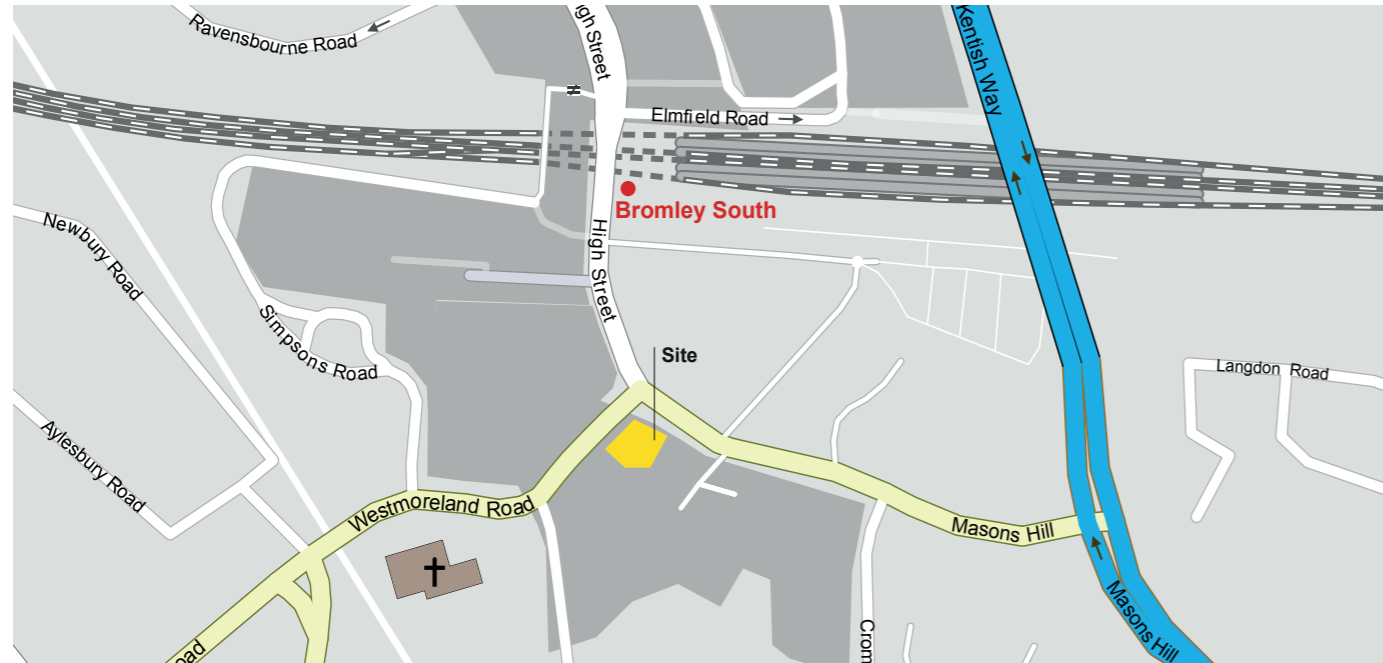
The personalised learning approach will allow for rapid learning and accelerated progress for those who are considered 'gifted and talented'. In many subjects, students will be grouped by ability to ensure a good match of the curriculum and teaching to students' needs. The monitoring and feedback systems in place will ensure high achieving students are making sufficient progress and not coasting. Students will be entered into external examinations when they are ready, rather than the traditional basis of age, thereby helping to provide them with a more challenging learning environment.

The recognition of gifted and talented students will be part of the SEN strategy and they will also be identified and closely monitored as part of the inclusive approach to learning. The partnership with Kings College London and Canterbury Christ Church University will offer the most gifted students stretching academic studies and experiences.

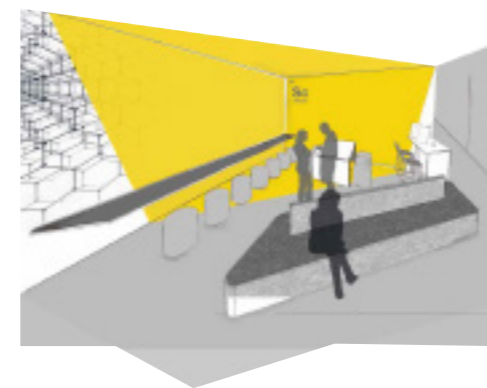
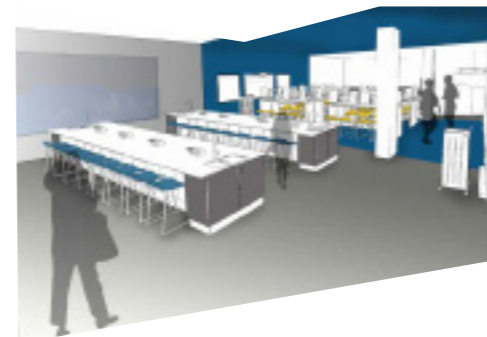
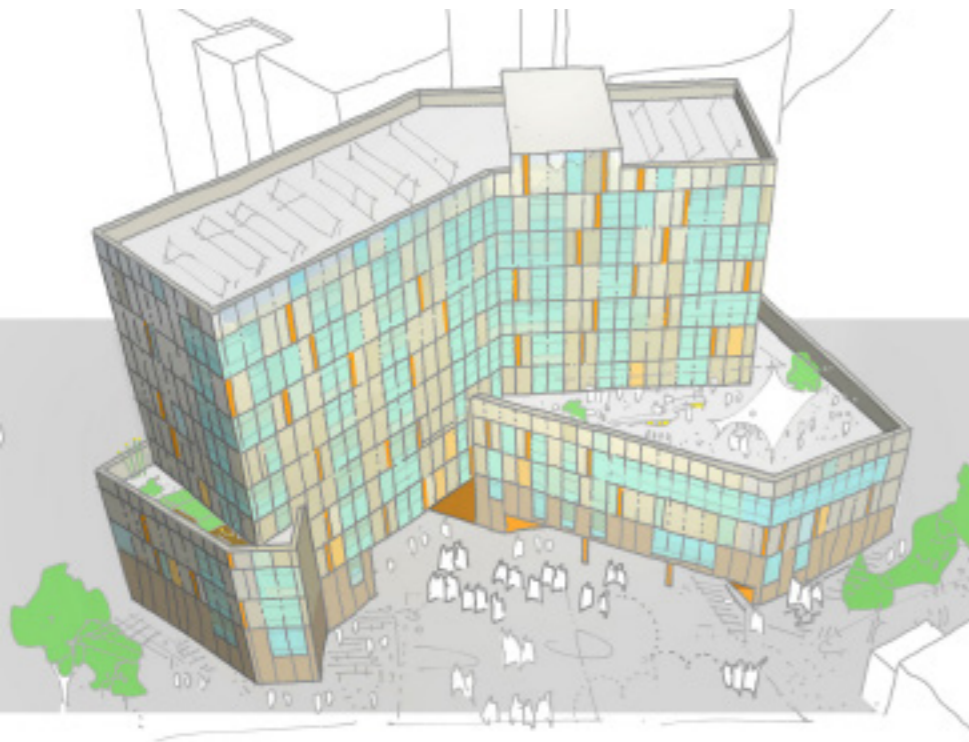


## LOCATION

The SHaW Futures Academy will be a new build located on Westmoreland Road in Bromley South.



## BUILDING CONCEPTS



## ADMISSIONS

SHaW Futures Academy is committed to a straightforward, open, fair and transparent admissions policy. We will welcome applications from a wide geographical area, including Bromley, South East London and Kent.

The school will act fully in accordance with the School Admissions Code, the School Admissions Appeals Code and admissions law as is applicable to academies.

At capacity (within six years) the SHaW Futures Academy will have 1140 students. For the first year of opening, students will be accepted into Year 7 and Year 12.

90 places will be available to Year 7 students and 80 places for Year 12. We will consider all applications to both these year groups, with a minimum entry requirement for prospective Year 12s. This is the achievement of 5 GCSE grades A\* to G, or the equivalent qualifications.

Students wishing to take advanced courses – A levels or their equivalent – must have achieved 5 or more A\* to C GCSEs including Maths, a Science and English Language, or full level 2 equivalent qualifications.

A full copy of the admissions policy, is available to download from [www.lsec.ac.uk/SHaW](http://www.lsec.ac.uk/SHaW)

## ABOUT THE PUBLIC CONSULTATION

In order to ensure that SHaW Futures Academy best meets the needs of young people, their families and other interested parties, it is crucial that we consult with as many individuals and groups as possible.

Therefore, this consultation will be open for six weeks, commencing on Friday 6 January and concluding on Friday 17 February 2017.

Following the closing date, we will prepare a report to be published on our website in March 2017, which will summarise all the views collected during the consultation. A report for the DfE will also be written, responding to the views expressed. Bromley Educational Trust will then consider these views and formally resolve whether to ask the Secretary of State to enter into a Funding Agreement with them to set up the SHaW Futures Academy. The Secretary of State will take into account the views expressed in the consultation when making her final decision.

## HAVE YOUR SAY...

Whether you are a prospective student, a local parent or carer, resident, local business, school or community organisation, we want to hear from you.

There are several ways in which you can participate in the consultation:

### Online:

Visit [www.lsec.ac.uk/SHaW](http://www.lsec.ac.uk/SHaW) to access the consultation proposal and questionnaire

### Email:

Electronic copies of the questionnaire can be sent to [SHaW@lsec.ac.uk](mailto:SHaW@lsec.ac.uk)

### Post:

Complete the questionnaire and send to **SHaW Futures Academy, c/o London South East Colleges, Rookery Lane, Bromley BR2 8HE**

### Attend our public meeting:

This will take place from **7pm-9pm on Tuesday 24 January 2017** at **London South East Colleges, Rookery Lane, Bromley BR2 8HE**.

This will provide people with the opportunity to put questions directly to our team and express views in person.

We also invite you to join our mailing list so we can keep you up to date with all the latest developments and forthcoming events relating to SHaW Futures Academy. Visit [www.lsec.ac.uk/SHaW](http://www.lsec.ac.uk/SHaW)

## CONTACT US

For further information about SHaW Futures Academy or to get in touch with us, please visit

[www.lsec.ac.uk/SHaW](http://www.lsec.ac.uk/SHaW)

or email: [SHaW@lsec.ac.uk](mailto:SHaW@lsec.ac.uk)